

Three targets were identified at each prospect and were subject to a 275 hole programme of geochemical drilling, using the Rotary Air Blast (RAB) method, in October 2011. Holes were typically drilled to 2.0 metres depth, with the deepest hole 6.0 metres, and were designed to obtain soil and bedrock samples.

Lyndon Bettina Prospect

At Lyndon Bettina, 193 geochemical holes were drilled on three drill targets defined by IP anomalies. Drillhole line locations are shown on Figure 2 below.

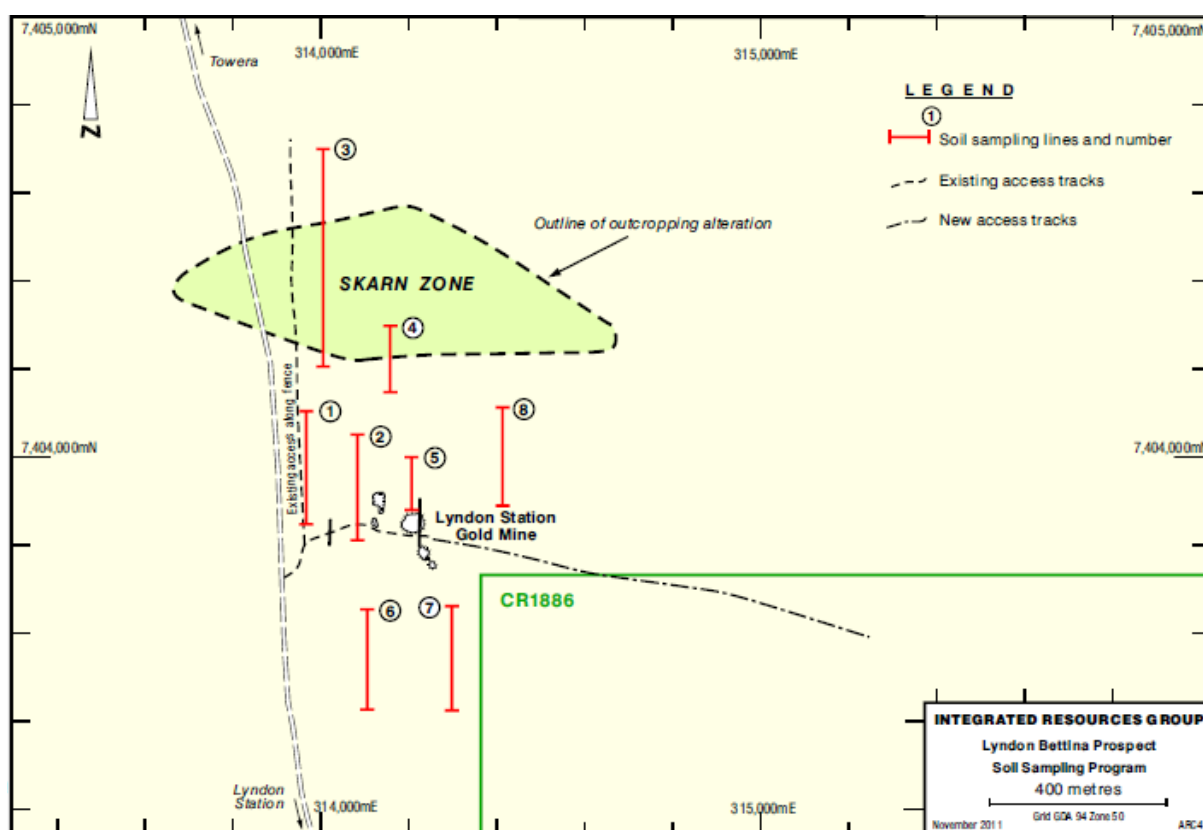


Figure 2

Assay results are available for approximately two-thirds of samples taken. Four samples returned values above 100 parts per billion gold (ppb Au), with a peak result of 1,105 ppb Au (1.105 g/t Au). Approximately 20% of samples recorded anomalous levels of gold, i.e. above 5 ppb Au, with approximately 10% above 10 ppb Au.

While limited interpretation has been undertaken at this time, the following broad conclusions can be drawn:

- anomalous values on lines 1, 2 and 5 suggest that the quartz vein mineralisation intersected in the October 2010 RC drilling campaign may extend for 250 metres along strike and remains open to the east and west;

- a number of anomalous values on line 3, which tested an IP chargeability high beneath the interpreted skarn zone, with a peak value of 256 ppb Au (0.256 g/t Au), suggest the potential for a different style of gold mineralisation in that location.

Results from the remaining lines are expected over coming days. Care should be taken in interpreting absolute values given the shortcomings of RAB drilling samples and the potential for contamination from the Bettina workings, however the results are nonetheless considered to be encouraging.

Broken Thumb Prospect

At Broken Thumb, 82 holes were drilled on three targets defined by IP anomalies. Drillhole line locations are shown on Figure 3 below. No results are available at this time but are anticipated over coming days.

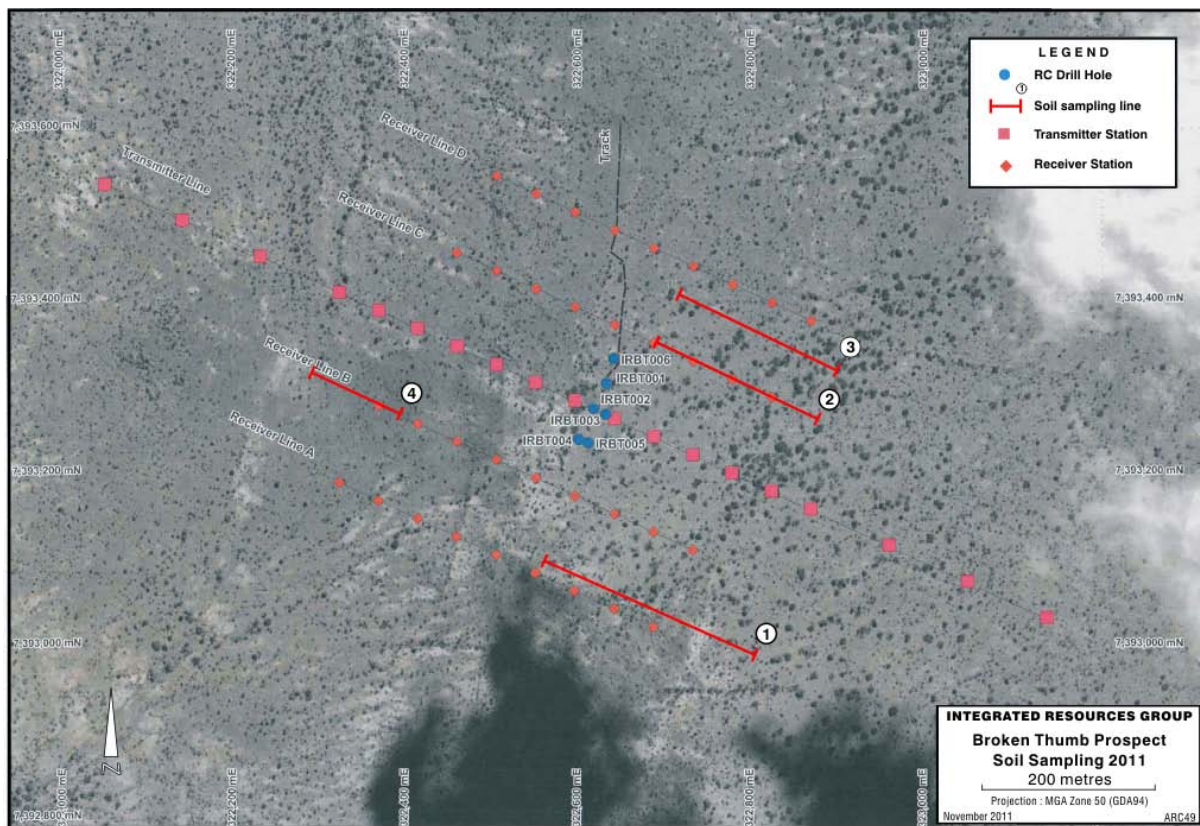


Figure 3

Further Work

Once the full results of the just-completed geochemical programmes at both prospects have been assessed, reverse circulation (RC) or diamond drilling is expected to be planned.



Timothy J. Moore
Chairman

Technical information in this report that relates to exploration results is compiled by a Competent Person as defined in the 2004 edition of the JORC Code being Dr Angus Collins (BSc (Hons) PhD FAusIMM) who acts as a Consulting Geologist to Integrated Resources Group Limited. Dr Collins has sufficient experience in mineral exploration relevant to the styles of mineralisation and types of deposits under consideration and consents to the inclusion in the public release of the matters based on the information in the form and context in which it appears.